

DESCRIPTION

The TEG4000-I is a Laboratory-quality, Synthesized RF Signal Source with minimum of 0dBm Output Power over a frequency range of 200 to 4000MHz

The TEG4000-I is the smallest USB microwave synthesized source available and is priced significantly below the current market offerings.

The source can be swept in step size as low as 1KHz between any two frequencies in its specified range.

Applications include local oscillator for frequency conversion, Scalar measurements and two or more can be combined for multi-tone testing . Use of the optional HUB allows the source to remain in a given state even after the host PC is removed from the system.

The unit also contains 0.5GB of flash memory used for installation files, test data and other supporting documentation. Drivers, utilities and documentation are available on the attenuator itself.



CALIBRATION

Full results of factory test data are stored in the each units flash memory and available through the USB interface.



RF DESIGN SERVICES



TEG4000-I

 Rev A June 2011

BENEFITS

Synthesized RF Source
USB 2.0 Interface
200MHz to 4000MHz



FEATURES

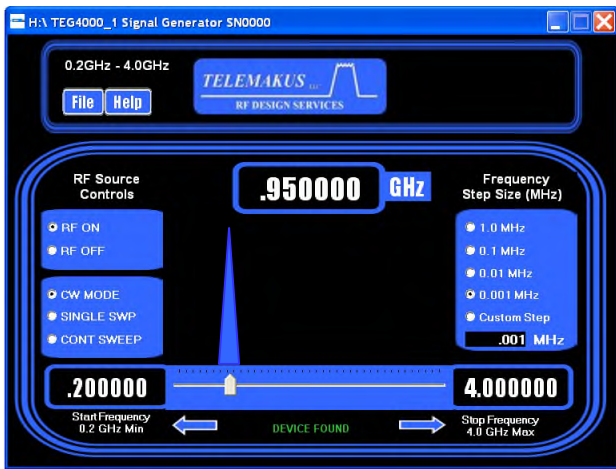
+1dBm Output
PC Software supported
Internal 10MHz Xtal Ref
-100dBc phase noise @100KHz



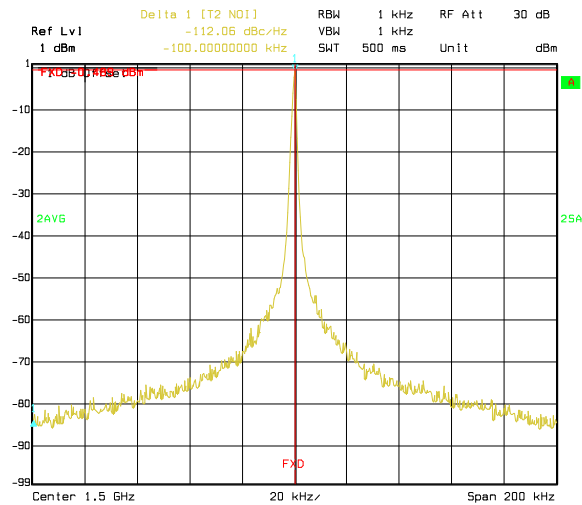
Actual Size

Phone: 916 458 6346
Fax: 916 983 8713
Email: mail@telemakus.com
www.telemakus.com

Primary Business Address
13405 Folsom Blvd #502
F O L S O M
C A , 9 5 6 3 0



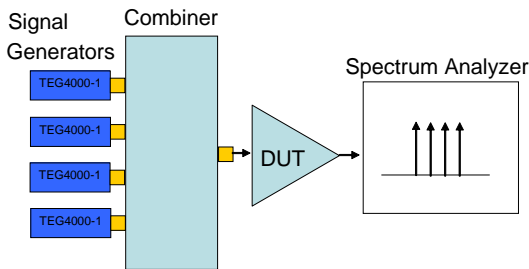
Easy to use graphical Interface with both numeric entry or slider controls.



Title: TEG4000-1 Phase Noise
Date: 19.JUN.2011 22:47:05



Simple Scalar Analyzer



Multi-Tone IMD
Typical Configurations



TEG4000-1 Rev I Jun 2011

Ordering information

Model	Frequency	Typ Output Power	Phase Noise
TEG4000-1	200-4000MHz	+1dBm	-100Bc@100KHz
TEG3500-8	2.7-3.5GHz	+8dBm	-105dBc@100KHz
TEG1000-10	0.7 to 1GHz	+10dBm	-105dBc@100KHz
TEG250-15	140-250MHz	+15dBm	-115dBc@100KHz

Specifications

Parameter	Specification
Freq Range	200MHz to 4000MHz
Internal Ref	10MHz (2 ppm)
Interface	USB 2.0
Current	150mA @5V
Step Size	1KHz
Phase Noise @200MHz	-118dBc/Hz @100KHz
Phase Noise @1000MHz	-108dBc/Hz @100KHz
Phase Noise @3000MHz	-103dBc/Hz @100KHz
Power Output	0dBm min +1dBm Typ
Pout Control	ON/OFF
2nd Harmonics <1GHz,1-2GHz,2-4GHz	-25dBc,-20dBc,-15dBc
3rd Harmonics <1GHz,1-4GHz	-10dBc,-12dBc
Spurious	-75dBc
RF Connectors	SMA Female
USB Connector	Mini A

Environmental

Temperature Range	-40 to +55 degC		
Not Environmentally sealed			

Phone: 916 458 6346
Fax: 916 983 8713
Email: mail@telemakus.com
www.telemakus.com

Primary Business Address
13405 Folsom Blvd #502
Folsom
CA,95630