

## Product Features

- Passive Integration on Silicon
- Low Insertion Loss
- High Isolation
- Solder Pad
- Low Cost

## Application

- Repeater
- Base Station
- RF Sub-Systems



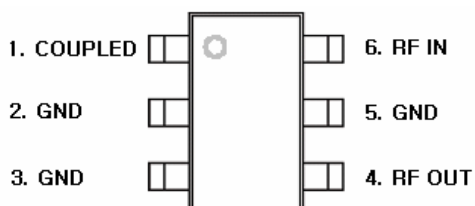
## Description

The CP Series is a monolithic directional coupler for low cost wireless applications.

## Specifications at 25 °C, 50Ω in/out impedance

PARAMETER	Units	Min	Typ	Max
Frequency Range	MHz	1700		1900
Insertion Loss	dB		0.3	0.5
Input Return Loss	dB	20	30	
Output Return Loss	dB	20	30	
Coupling	dB	13	14	15
Coupling Return Loss	dB	20	35	
Isolation	dB	18	22	
Remarks	MHz	1800		

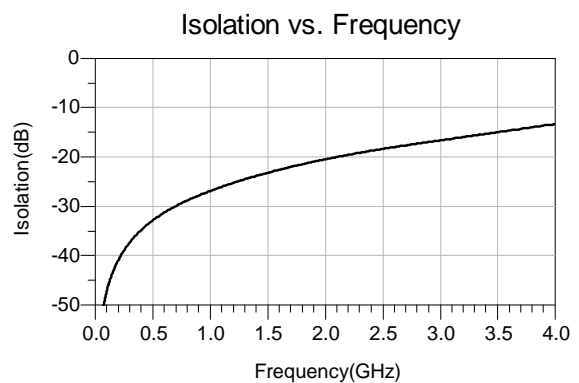
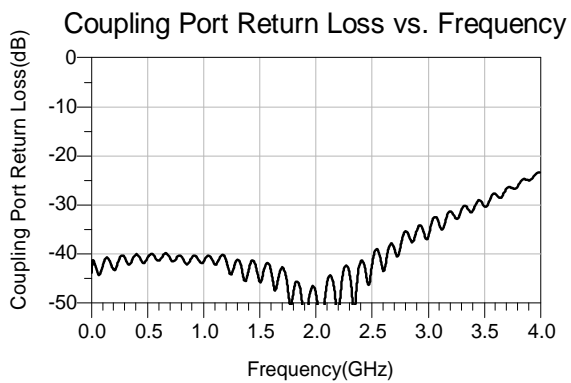
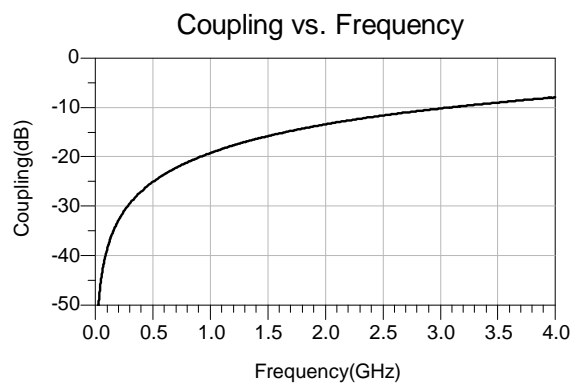
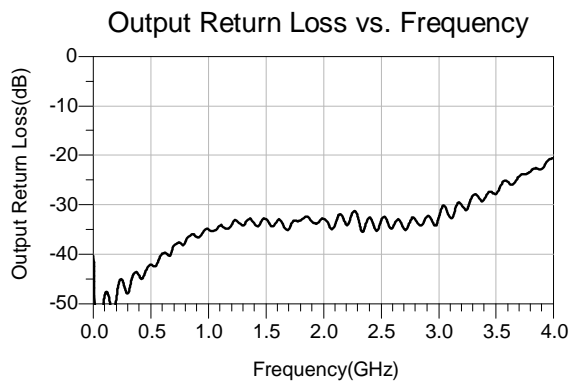
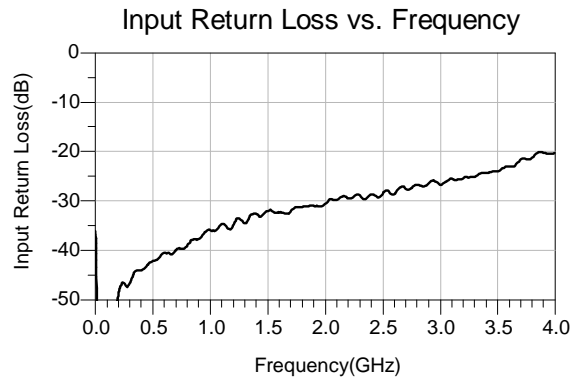
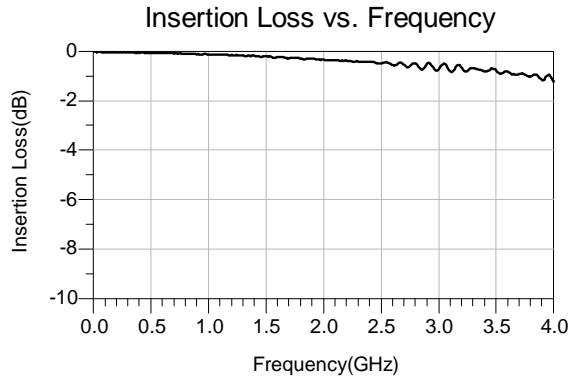
## Block Diagram & Pin Out



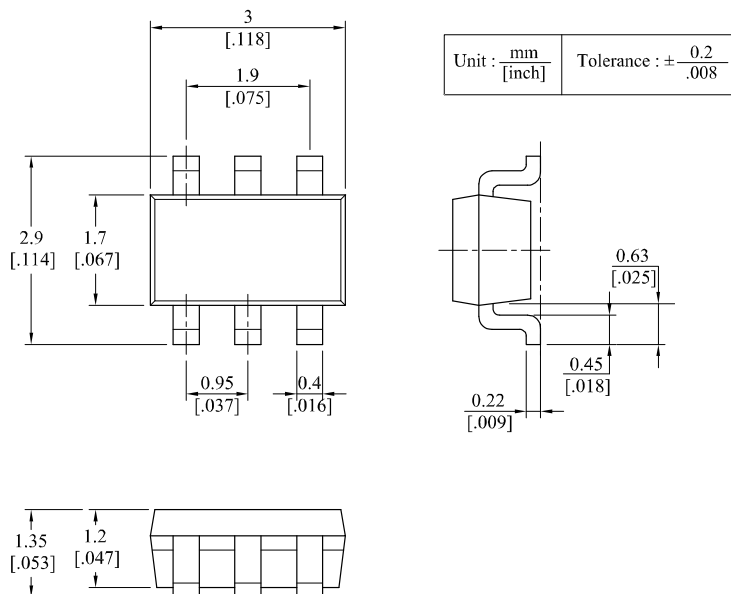
## Absolute Maximum Ratings

Parameter	Value
Input Power	1 W
Operating Temperature	-40 ~ +85 °C
Storage Temperature	-65 ~ +150 °C

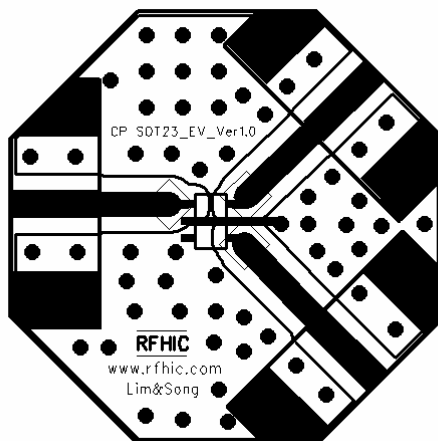
## Typical Performance Data at 25°C (SOT23-6L Package)



## Package Dimensions (Type: SOT23-6L)



## PCB Evaluation Board Layout Pattern



PCB material (FR4), PCB thickness (0.8t), Via hole ( $\varnothing 0.7$ )

RFHIC Corporation (RFHIC) reserves the right to make changes to any products herein or to discontinue any product at any time without notice. RFHIC do not assume any liability for the suitability of its products for any particular purpose, and disclaims any and all liability, including without limitation consequential or incidental damages. The product specifications herein expressed have been carefully checked and are assumed to be reliable. However, RFHIC disclaims liability for inaccuracies and strongly recommends buyers to verify that the information they are using is current before placing purchase orders. RFHIC products are not intended for use in life support equipment or application where malfunction of the product can be expected to result in personal injury or death. Buyer uses or sells such products for any such unintended or unauthorized application, buyer shall indemnify, protect and hold RFHIC and its directors, officers, stockholders, employees, representatives and distributors harmless against any and all claims arising out of such use. RFHIC's liability under or arising out of damages, claims of whatsoever kind and nature which RFHIC products could cause shall be limited in amount to the net purchase price of the products sold to buyer by RFHIC.