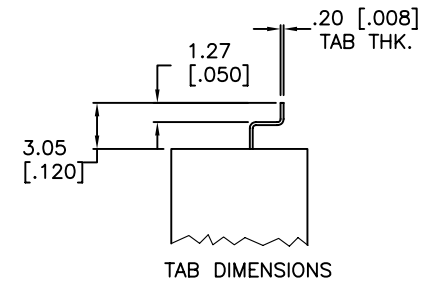
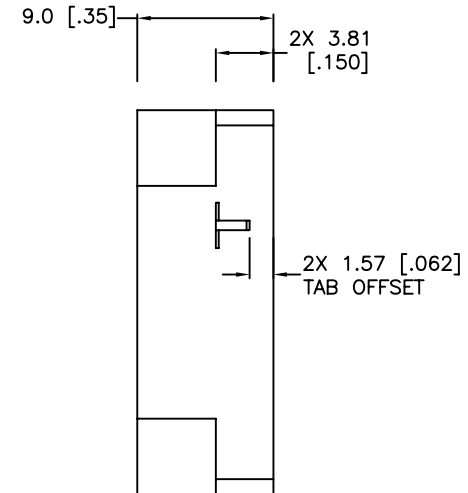
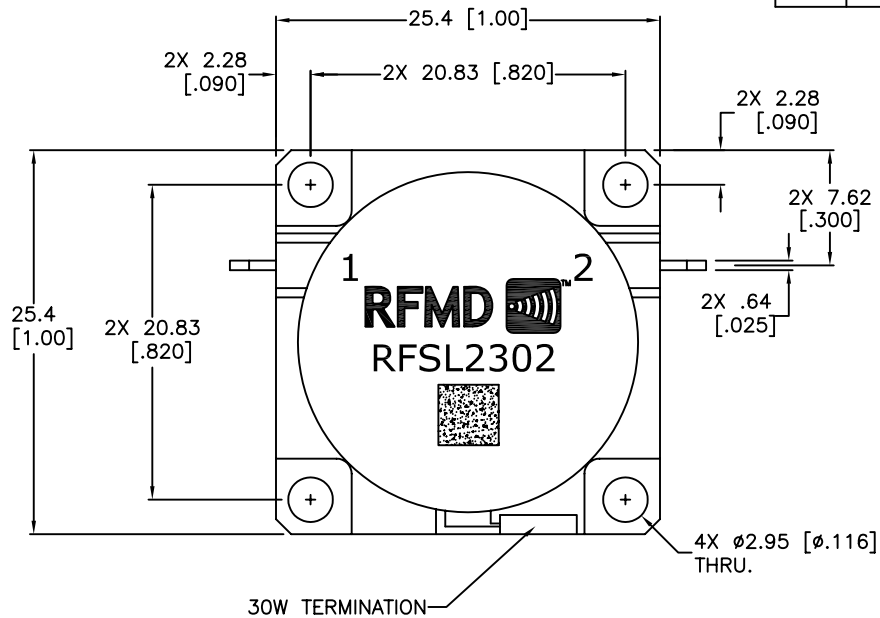


REV.	DESCRIPTION	ECO	DATE	APPROVED
A	INITIAL RELEASE		04/06/10	P.T.



Specifications

Parameter	Minimum	Typical	Maximum
Frequency Range (MHz)	920		960
Insertion Loss (dB)		< .20	.30
Isolation (dB)	22	> 25	
Return Loss (dB)	24	> 25	
FWD: IMD 2T at 35W per T 5MHz Spacing (dBc)			-75

Power & Temperature Ratings

Parameter	Maximum
Forward PWR Peak/AVG	500/200 Watts
Reverse Power	30 Watts
Operating Temperature	-40 to +85° C
Storage Temperature	-40 to +95° C

ISOLATOR MODEL: RFSL2302

Notes:

- All Material And Plating Are RoHS Compliant.
- Isolator flange held to +85 °C, 10 minutes maximum duration.

UNLESS OTHERWISE SPECIFIED
DIMENSIONS ARE IN MM [INCHES],
TOLERANCES ARE:
FRACTIONS DECIMALS ANGLES
± .x± .3 [.01] ±0.5°
± .xx± .13 [.005]

MATERIAL

FINISH
HOUSING: ELECTROLESS NICKEL
CIRCUIT TAB: SILVER

APPROVALS		DATE
DRAWN	P.T.	04/06/10
ENG.	P.T.	04/06/10
MKT./SALES	.	.
BUS MGR.	.	.

RFMD 

OUTLINE DRAWING

SIZE	SCALE	DWG.	REV.
A	2X	200-00308	A

DO NOT SCALE DRAWING

SHEET 1 OF 1