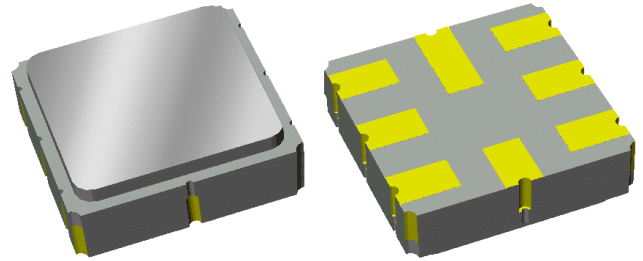


Preliminary Data Sheet

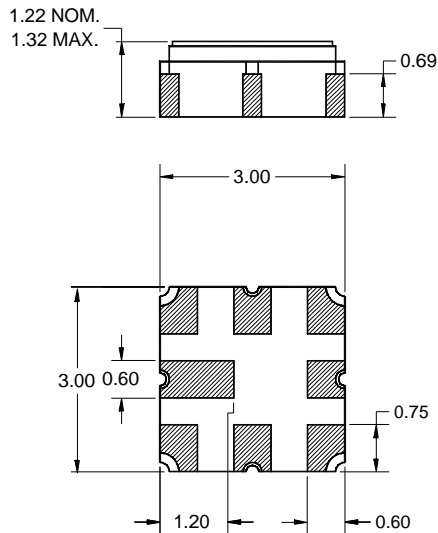
Features

- For WLAN applications
- Usable bandwidth 16 MHz
- Low loss
- High attenuation
- No impedance matching required for operation at 100 Ω
- Balanced operation
- Ceramic Surface Mount Package (SMP)
- Small size



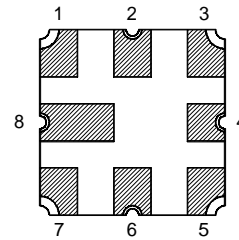
Package

Surface Mount 3.00 x 3.00 x 1.32 mm



Pin Configuration

Bottom View



Pin No.	Description
1	Input
2	Bal Input
6	Output
5	Bal Output
3,4,7,8	Ground

Preliminary Data Sheet

Electrical Specifications ⁽¹⁾

Operating Temperature Range: -10 to +85 °C

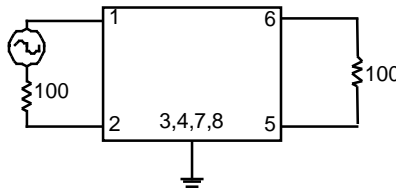
Parameter	Minimum	Typical	Maximum	Unit
Center Frequency	-	1150	-	MHz
Lower 1 dB Point	-	-	1145	MHz
Upper 1 dB Point	1155	-	-	MHz
Lower 2 dB Point	-	-	1142	MHz
Upper 2 dB Point	1158	-	-	MHz
Minimum Insertion Loss	-	4.4	5.5	dB
Absolute Group Delay at 1150 MHz	-	55	80	nsec
Group Delay Variation 1142 – 1158 MHz	-	14	90	nsec p-p
Relative Attenuation				
500 – 1118 MHz	35	52	-	dB
1118 – 1128 MHz	4	12	-	dB
1170 – 1182 MHz	20	27	-	dB
1182 – 1600 MHz	35	44	-	dB

Notes:

- All specifications are based on the test circuit shown below

Test Circuit:

100 Ω
Differential

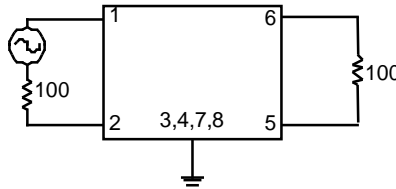


No impedance matching
required

Preliminary Data Sheet

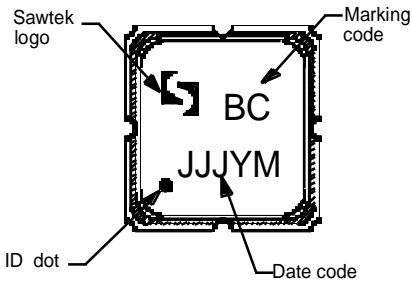
Matching Schematics

100 Ω
Differential

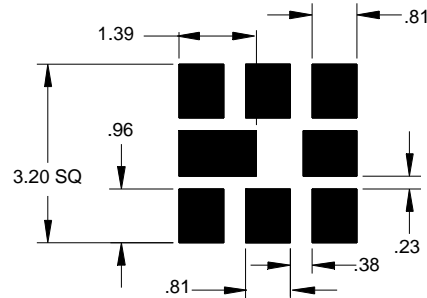


No impedance matching
required

Marking

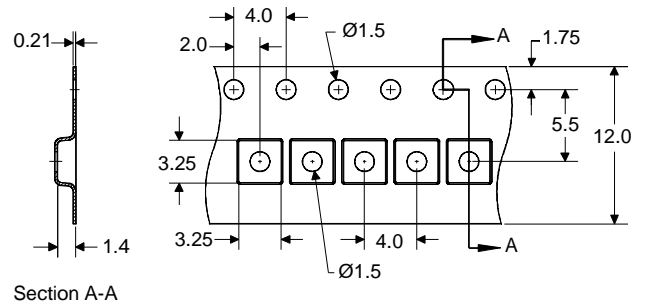
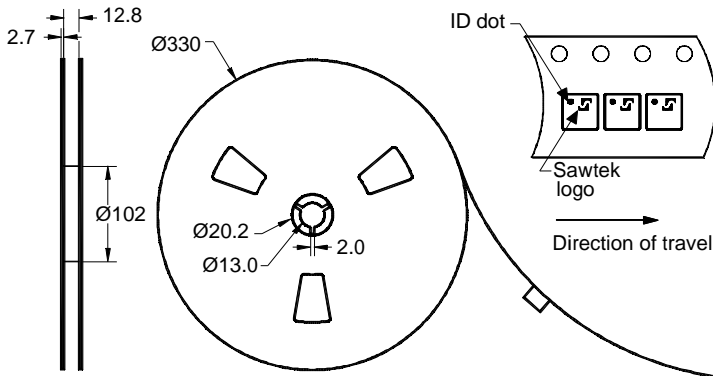


PCB Footprint



This footprint represents a recommendation only
Dimensions shown are nominal in millimeters

Tape and Reel



Dimensions shown are nominal in millimeters
Packaging quantity: 5000 units/reel