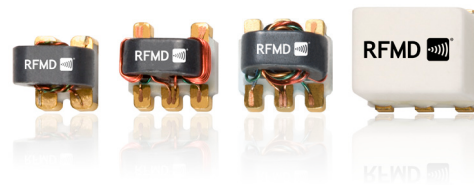


A new line of mini-RF passive couplers, splitters, and transformers is now available from RFMD! Designed for applications that require very small, low-cost, and highly reliable surface mount components, these high-performance devices serve a broad range of end markets, including broadband and wireless communications systems.

CATV original equipment manufacturers (OEMs) require RF passives in both head end, forward path, and return path applications. RFMD now offers a cost-effective solution for these CATV OEMs and other broadband manufacturers by providing this new line of low-cost mini-passive components that provide better performance with a smaller footprint. Contact your local RFMD sales representative for pricing.

FEATURES

- Extremely small industry-standard footprint
- S21 package, the industry's smallest footprint wideband transformer
- Superior performance
- Low cost and ROHS compliant
- 50 ohms and 75 ohms impedance



2 WAY SPLITTERS - 0° OFFSET

Part Number	Freq Range (MHz)	Return Lo Min (dB)	Isolation Typ (dB)	Isolation Min (dB)	Insertion Loss Typ (dB)	Insertion Loss Max (dB)	Amp Unbalance Max (dB)	Phase Unbalance Max (Deg)	Package
RFSP5522*	5 to 1200	14	22	18	1.0	1.6	0.6	5.0	S18
RFSP5722	5 to 1200	12	28	22	0.8	1.5	0.5	5.0	S18

* 50 ohms

COUPLERS

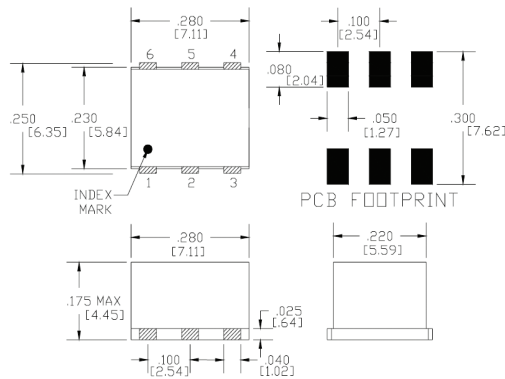
Part Number	Freq Range (MHz)	Nominal Coupling (dB)	Coupling Flatness (dB)	Mainline Loss Typ (dB)	Mainline Loss Max (dB)	Directivity Typ (dB)	Directivity Min (dB)	Return Loss Min (dB)	Package
RFCP5742	5 to 1200	10 ± 0.5	± 0.5	1.5	2.0	14	10	11	S18
RFCP5743	5 to 1200	10 ± 0.5	± 0.5	1.5	2.0	14	8	14	S20
RFCP5762	5 to 1200	16 ± 0.5	± 0.5	0.6	1.2	20	10	14	S18
RFCP5763	5 to 1200	16 ± 0.5	± 0.5	0.8	1.2	20	8	14	S20

TRANSFORMERS

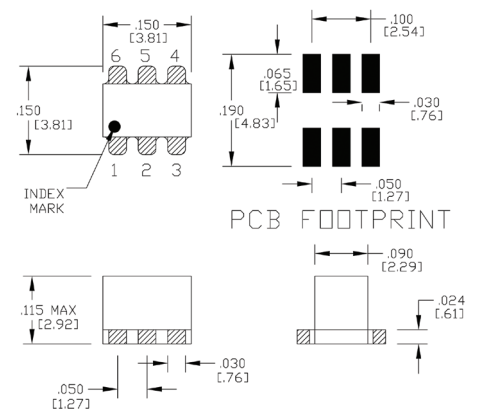
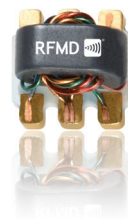
Part Number	Freq Range (MHz)	Impedance Ratio	Insertion Loss 3 dB Bandwidth (MHz)	Insertion Loss 2 dB Bandwidth (MHz)	Insertion Loss 1 dB Bandwidth (MHz)	Package
RFXF0573*	5 to 40	1:16	—	—	5 to 40	S20
RFXF2513*	0.3 to 200	1:4	—	—	3 to 200	S20
RFXF2533*	2 to 350	1:2	—	—	2 to 350	S20
RFXF2553*	1 to 350	1:4	—	—	1 to 350	S20
RFXF2713	5 to 200	1:1	—	—	5 to 200	S20
RFXF2795	5 to 200	1:1.78	—	—	5 to 200	S19
RFXF3513*	0.4 to 500	1:1	0.4 to 500	0.5 to 300	1 to 100	S20
RFXF3553*	2 to 1000	1:4	—	2 to 1000	2 to 400	S20
RFXF4513*	5 to 1000	1:1	—	5 to 1000	5 to 850	S20
RFXF5553*	5 to 1200	1:4	—	5 to 1200	5 to 500	S20
RFXF5702	5 to 1200	1:1	—	5 to 1200	5 to 750	S18
RFXF5703	5 to 1200	1:1	—	5 to 1200	10 to 870	S20
RFXF5704	5 to 1200	1:1	—	5 to 1200	5 to 800	S21
RFXF5712	5 to 1200	1:1	—	5 to 1200	5 to 1000	S18
RFXF5743	5 to 1200	1:3	—	5 to 1200	3 to 300	S20
RFXF5753	5 to 1200	1:4	5 to 1200	5 to 870	—	S20
RFXF5792	5 to 1200	1:1	—	5 to 1200	5 to 1000	S18
RFXF5793	5 to 1200	1:1	—	—	5 to 1200	S20
RFXF5794	5 to 1200	1:1	—	—	5 to 1200	S21
RFXF6553*	10 to 1900	1:4	10 to 1900	10 to 1000	10 to 500	S20
RFXF8553*	500 to 2500	1:4	500 to 2500	500 to 1500	500 to 1000	S20
RFXF9503*	3 to 3000	1:1	3 to 2700	3 to 2400	3 to 1800	S20
RFXF9504*	5 to 3000	1:1	5 to 3000	5 to 2700	5 to 1200	S21

* 50 ohms

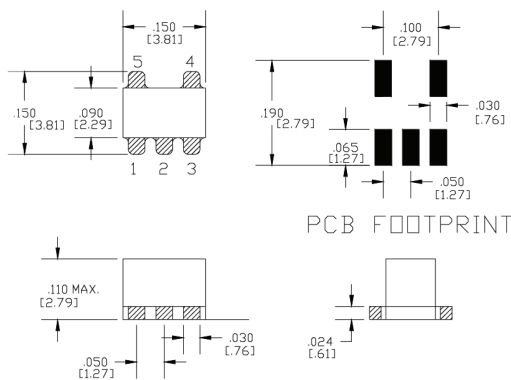
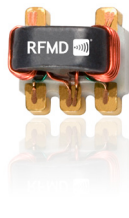
PACKAGE - S18



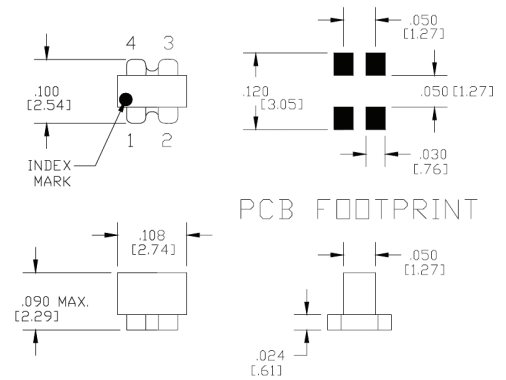
PACKAGE - S19



PACKAGE - S20



PACKAGE - S21



Order RFMD products online at www.rfmd.com/rfmdExpress.

For sales or technical support, contact your authorized local sales representative (see www.rfmd.com/globalsales).

Register to receive RFMD's latest product releases with our Email Component Alerts at www.rfmd.com/emailalert.

7628 Thorndike Rd., Greensboro, NC 27409-9421 USA • Phone 336.664.1233



These products comply with RFMD's green packaging standards.

RFMD® is a trademark of RFMD, LLC. All other trade names, trademarks and registered trademarks are the property of their respective owners. ©2010 RFMD.

MPG.Passives.0811.200



rfmd.com