

# RESISTOR CHIP

**DC - 4 GHz  
25 WATTS**



MODELS: ANC100-200AX-XXXXY, ANC100-200AW-XXXXY & ANC100-200AS-XXXXY

## SPECIFICATIONS:

### Electrical:

Frequency Range \_\_\_\_\_ DC - 4 GHz  
Resistance \_\_\_\_\_ 50  $\pm$ 5% Ohms Standard  
Power Handling\* \_\_\_\_\_ See table below

Power Rating**	Type S and X	Type W
< 225 Ohms	25 W	15 W
> 225 Ohms	15 W	10 W

\*\*Resistor up

Derated Linearly to 0 Watts @ +150°C

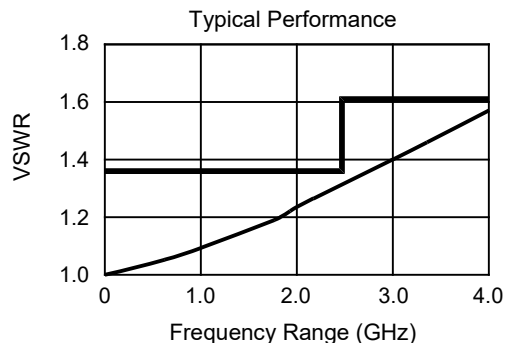
### VSWR:

DC - 2.5 GHz \_\_\_\_\_ 1.35:1 Max.  
2.5 - 4 GHz \_\_\_\_\_ 1.60:1 Max.  
Operating Temp. Range \_\_\_\_\_ -55°C to +150°C

### Mechanical:

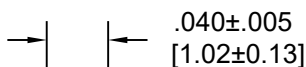
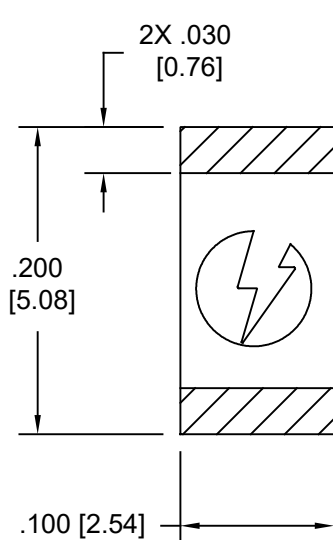
Substrate \_\_\_\_\_ Aluminum Nitride  
Resistor Material \_\_\_\_\_ Proprietary Thin Film  
Terminal Finish \_\_\_\_\_ Silver

\*Mounting Surface Shall not Exceed 100°C Max.

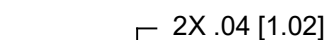


Model Number: **ANC100-200AX-50R0J** Shown

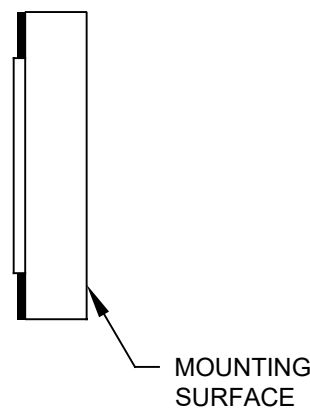
Tolerance: .XXX =  $\pm$ 0.010



TYPE X



TYPE W



TYPE S

## HOW TO ORDER

Model Number: **ANCT100-200AX-XXXXY**

Terminal Options  
= Silver over Nickel  
T = Tin Lead Solder  
H = Lead Free Solder

Terminal Type  
X = No wrap  
W = Both ends wrap around  
S = Backside blank

Tolerance  
G =  $\pm$ 2%  
J =  $\pm$ 5%

Ohm Value (Other values available)  
50R0 = 50 Ohms  
1000 = 100 Ohms

Dimensions are for substrate only and do not include terminal thickness or optional tinning thickness.

Note: Dimensions in Brackets are Expressed in Millimeters and are for Reference Only.

Design specifications are subject to change without notice.

300 Dino Drive • Ann Arbor, MI 48103-9457 U.S.A. • 888-244-6638 or 734-426-5553 • FAX 734-426-5557 • Spectrumcontrol.com

OL-ANC100-200A; REV B