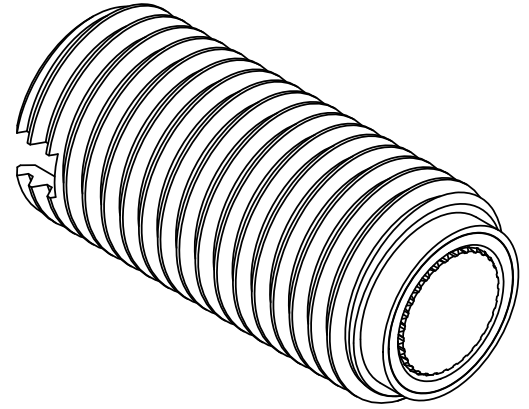
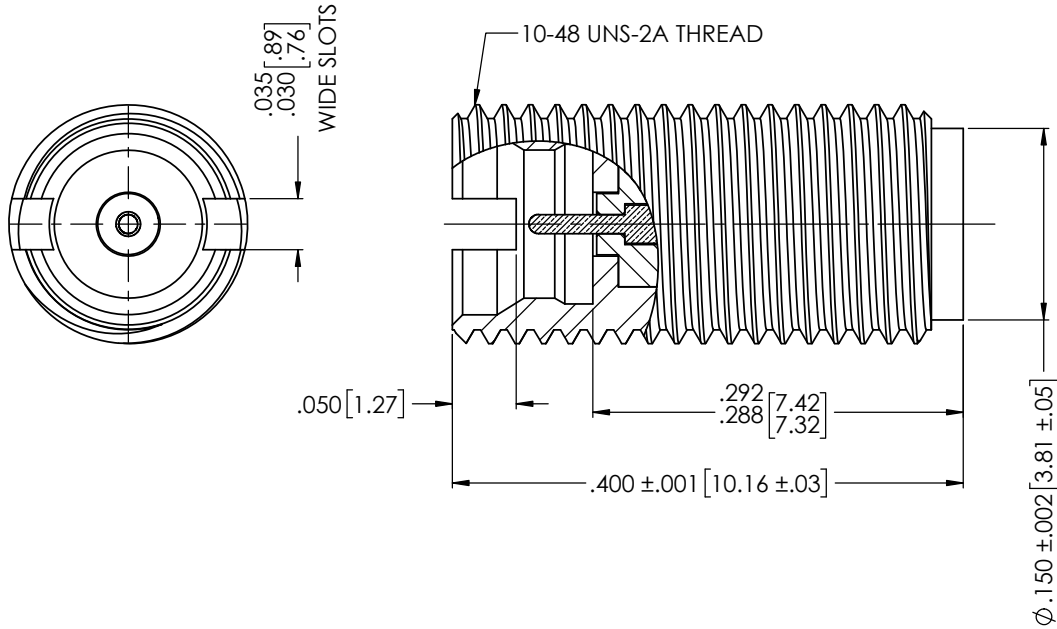


8851000G001-010



MECHANICAL SPECIFICATIONS	
DURABILITY	1000 CYCLES
CAPTIVATION - CONTACT	2 LBS MIN
FORCE TO ENGAGE	5 LBS TYP
FORCE TO DISENGAGE	0.5 LBS TYP
ELECTRICAL SPECIFICATIONS	
FREQUENCY RANGE	DC-25GHz
RETURN LOSS (MIN)	26 dB
IMPEDANCE	50 ± 2 OHMS
MAX POWER @ 20° C	1 WATT
DWV @ SEA LEVEL	500 Vrms
INSULATION RESIST.	5000 MEGOHMS

NOTES:
 1. ASSEMBLED CONNECTOR INTERFACE IS DESIGNED IN ACCORDANCE WITH MIL-STD-348.

DESCRIPTION	MATERIAL	FINISH
CAP	BRASS PER ASTM B16, C36000 ALLOY, TEMPER H02	GOLD PLATE PER ASTM B488, TYPE 2, CLASS .25
INSULATOR	TEFLON PER ASTM D1710, TYPE 1, GRADE 1, CLASS A.	N/A
CONDUCTOR	BERYLLIUM COPPER PER ASTM B196, C17300, TEMPER TD04	GOLD PLATE PER ASTM B488, TYPE 2, CLASS 1.27
RESISTOR	ALUMINA OXIDE 96% PER MIL-I-10	GOLD PLATE
CONTACT	BERYLLIUM COPPER PER ASTM B196, C17300, TEMPER TD04	GOLD PLATE PER ASTM B488, TYPE 2, CLASS 1.27
BODY	CORROSION RESISTANT STEEL PER ASTM A582, S30300, COND. A	GOLD PLATE PER ASTM B488, TYPE 2, CLASS 1.27

Table 1

PROPRIETARY AND CONFIDENTIAL
 THE INFORMATION CONTAINED IN THIS DRAWING IS THE SOLE PROPERTY OF DELTA ELECTRONICS MFG CORP. ANY REPRODUCTION IN PART OR AS A WHOLE WITHOUT THE WRITTEN PERMISSION OF DELTA ELECTRONICS MFG CORP. IS PROHIBITED.
 FILE NAME: 8651000G001-010T

UNLESS OTHERWISE SPECIFIED:		NAME	DATE
DIMENSIONS ARE IN INCHES		DRAWN	SRC 8/31/2022
TOLERANCES:		CHECKED	BJM 8/31/2022
FRACTIONAL ± 1/64		ENG APPR.	BJM 8/31/2022
ANGULAR: MACH ± 1° BEND ± 1°		COMMENTS:	
TWO PLACE DECIMAL ±.01			
THREE PLACE DECIMAL ±.005			
SURFACE FINISH = 63			
MAX. CORNER BREAKS = .004			
THIRD ANGLE PROJECTION			
MATERIAL	SEE TABLE		
FINISH	SEE TABLE		
SCALE:			

DELTA ELECTRONICS MFG CORP. BEVERLY, MA 01915 www.deltarf.com / Ph: 978-927-1060 / Fax: 978-922-6430		
TITLE:		
SMP MALE - FULL DETENT - TERMINATION		
SIZE	DWG. NO.	REV
B	8851000G001-010	-
CODE ID - 00795	WEIGHT: 0.85 g	SHEET 1 OF 1