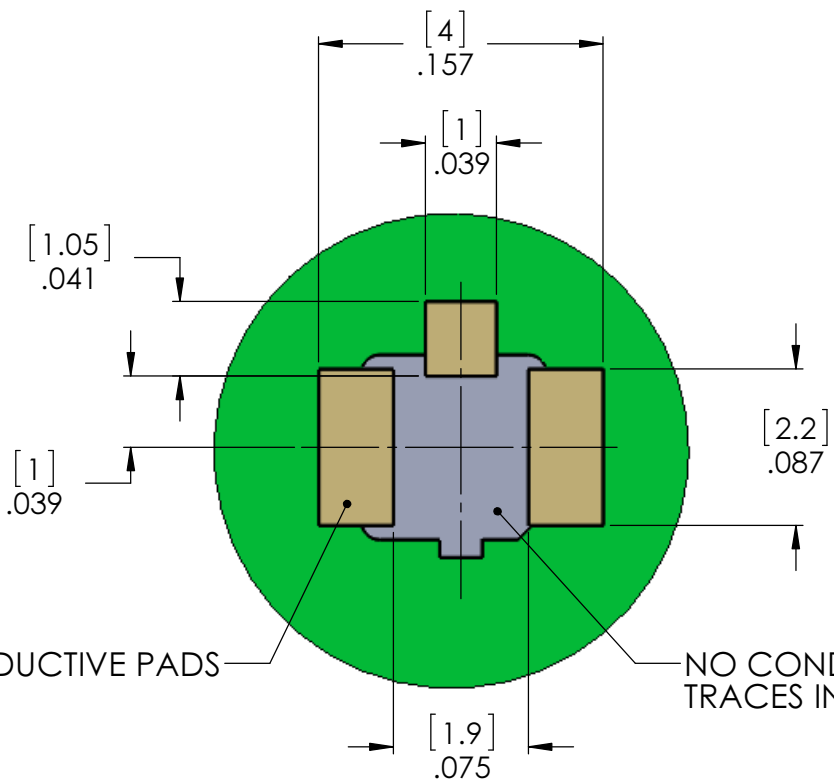
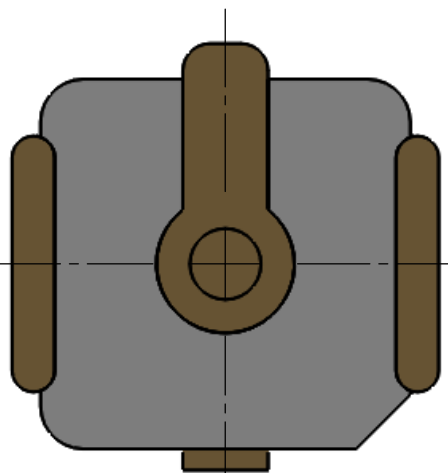
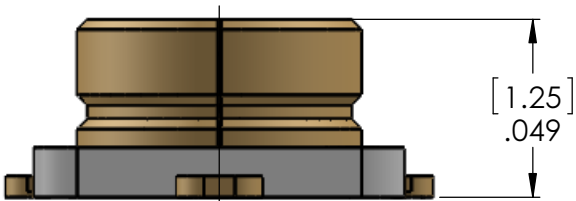
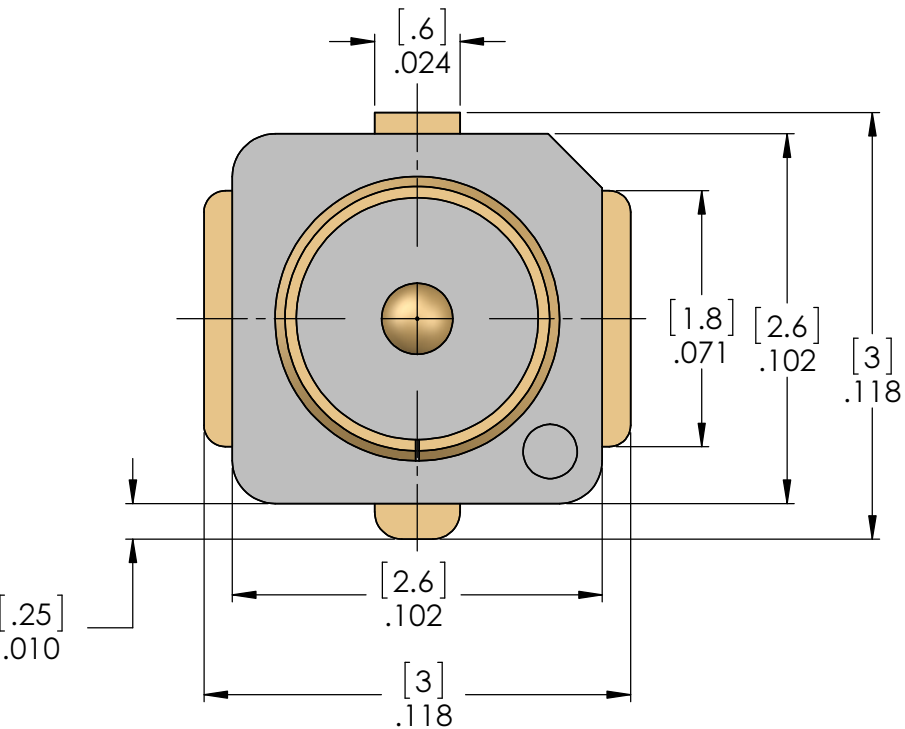
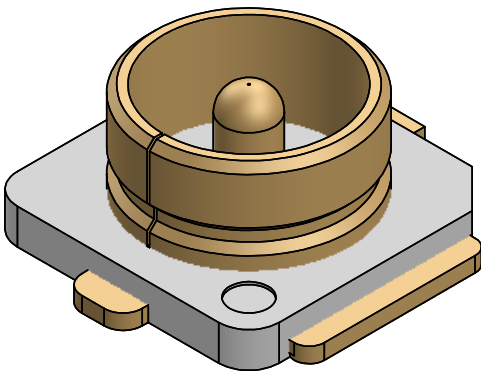




9467000G91P-502



CONDUCTIVE PADS

NO CONDUCTIVE TRACES IN THIS AREA

RECOMMENDED PCB MOUNTING PATTERN

MECHANICAL SPECIFICATIONS

DURABILITY	30 CYCLES
------------	-----------

ELECTRICAL SPECIFICATIONS


FREQUENCY RANGE	DC - 6 GHz
VSWR	1.50 MAX
IMPEDANCE	50 ± 2 OHMS
WORKING VOLTAGE @ SEA LEVEL	170 V MAX
DWV @ SEA LEVEL	200 VRMS
INSULATION RESIST.	5,000 MΩ

ENVIRONMENTAL SPECIFICATIONS

TEMP RANGE	-40° TO +90° C
------------	----------------

HOUSING	LCP (UL94V-0) WHITE	N/A
GROUND CONTACT	PHOSPHOR BRONZE PER ASTM B139, C54400, TEMPER HD	GOLD PLATE PER ASTM B488
CONTACT	BRASS PER ASTM B16, C36000 ALLOY, TEMPER H02	GOLD PLATE PER ASTM B488
DESCRIPTION	MATERIAL	FINISH

Table 1

UNLESS OTHERWISE SPECIFIED:		NAME		DATE		DELTA ELECTRONICS MFG CORP.					
DIMENSIONS ARE IN INCHES TOLERANCES: FRACTIONAL ± 1/64 ANGULAR: MACH ± 1° BEND ± 1° TWO PLACE DECIMAL ±.01 THREE PLACE DECIMAL ±.005 SURFACE FINISH = 63 MAX. CORNER BREAKS = .004		DRAWN	ADK	3/10/2015		BEVERLY, MA 01915					
		CHECKED	ADK	3/10/2015		www.deltarf.com / Ph: 978-927-1060 / Fax: 978-922-6430					
		ENG APPR.	BJM	3/10/2015		TITLE:					
		COMMENTS:		MHF/U.FL PCB MOUNT RECEPTACLE							
THIRD ANGLE PROJECTION						SIZE		DWG. NO.		REV	
MATERIAL		SEE TABLE				<b>B</b>		9467000G91P-502		-	
FINISH		SEE TABLE									
SCALE:								CODE ID - 00795		WEIGHT: 0.02 g	
										SHEET 1 OF 1	

PROPRIETARY AND CONFIDENTIAL  
THE INFORMATION CONTAINED IN THIS DRAWING IS THE SOLE PROPERTY OF DELTA ELECTRONICS MFG CORP. ANY REPRODUCTION IN PART OR AS A WHOLE WITHOUT THE WRITTEN PERMISSION OF DELTA ELECTRONICS MFG CORP. IS PROHIBITED.  
FILE NAME: 9467000G91P-502T