

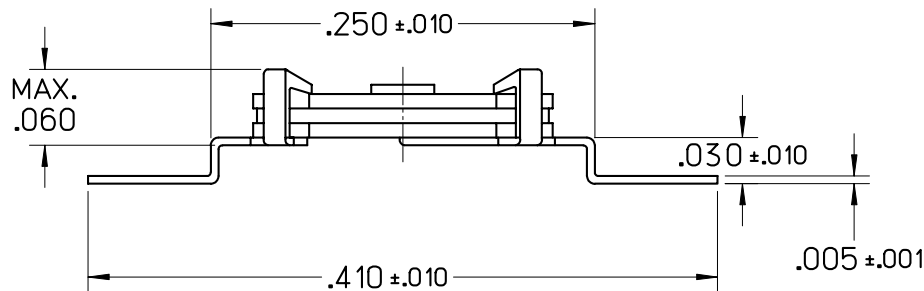
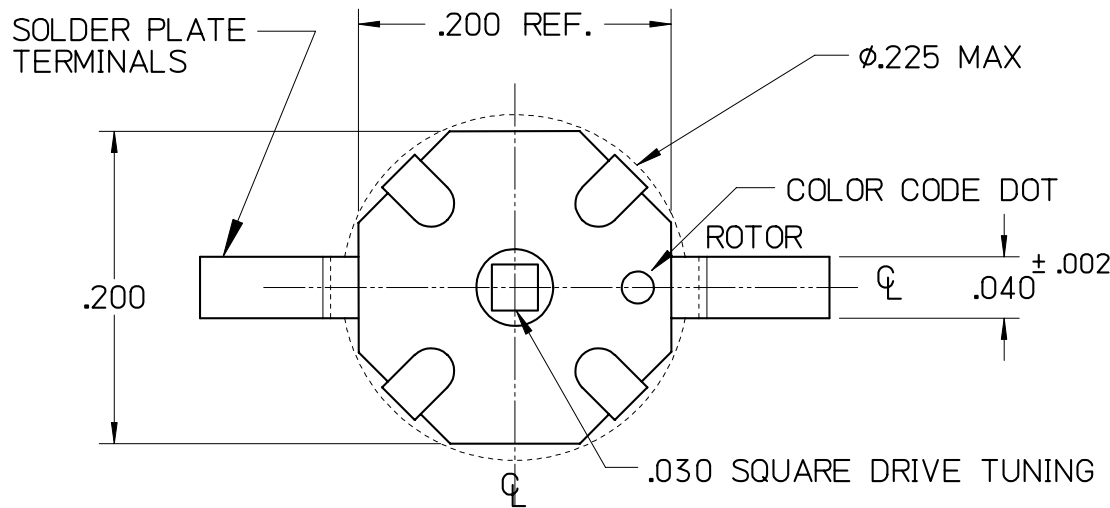
JMC PART NO.	COLOR CODE	CAPACITY RANGE	Q @ 100MHz
9410-0LSL-3	RED	1.0pF TO 4.5pF	> 1000
9410-1LSL-3	BLACK	2.5pF TO 10pF	> 1000
9410-3LSL-3	ORANGE	6.0pF TO 35pF	> 200
9410-5LSL-3	GREEN	8.0pF TO 50pF	>200

MI DRG. NO. 9410-#LSL-3C REV.

9410 DASH NO. **LSL-3** **C**

THIN-TRIM[®] CAPACITOR
(US PATENT NO. 3,701,932)

SPECIFICATIONS		FILE: THINOUT
CAPACITY RANGE	SEE CHART	
WORKING VOLTAGE	250 VDC (TEST VOLTAGE 500 VDC)	
Q @ 100 MHz	SEE CHART	
INSULATION RESISTANCE	> 10 ⁴ MEGOHMS	
TEMPERATURE RANGE	-55°C TO +125°C	
TORQUE	0.2 TO 2.0 OZ. IN.	
MOISTURE RESISTANCE	MIL-STD-202, METHOD 106	
SHOCK	100 g @ 6 ms	
VIBRATION	15 g @ 10-2000 Hz	
SETTING DRIFT	< 1%	
CERAMIC DIELECTRIC STRUCTURE		
SOLDER FINISH TERMINALS		



LEVEL	DATE	DRN.	CHK.	APP.	ECN
C	05/03/07	MLD	MAI	MAI	000539
B	12/11/06	MLD	-	-	000475

REVISIONS

DRN.	CHK.	APP.	SCALE
MLD	MAI	MAI	8" = 1"
DATE	DATE	DATE	.XX ± .015
12/11/06	05/03/07	05/03/07	.XXX ± .005



JOHANSON MANUFACTURING CORPORATION
ROCKAWAY VALLEY ROAD, BOONTON, N.J. 07005 (973)334-2676 FAX (973)334-2954
ELECTRONIC ACCURACY THROUGH MECHANICAL PRECISION

PROPRIETARY INFORMATION CONTAINED NOT TO BE USED WITHOUT JOHANSON MANUFACTURING CORPORATION APPROVAL