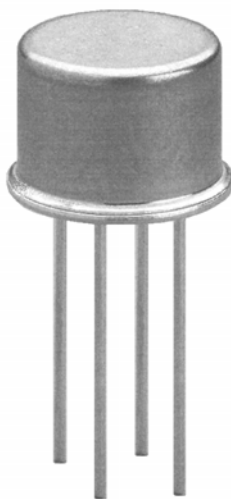




DBM-185
Subminiature
TO-5 Double
Balanced
Mixer
600-2000 MHz



DESCRIPTION

DBM-185 is a high performance subminiature double balanced mixer utilizing precision matched beam-lead Schottky barrier diodes. The L and R ports have a bandwidth of 600 MHz to 2000 MHz, while the X port covers a bandwidth of DC to 1400 MHz. Inputs to any two ports within their specified frequency range will produce the sum and difference frequency at the third port, with a minimum of undesired harmonic modulation products. The double balanced mixer may be used as an up converter, down converter, spectrum inverter or for any other frequency changing application. Other uses are as a phase detector, double sideband suppressed carrier modulator, bi-phase modulator, pulse modulator, frequency doubler or a voltage/current variable attenuator.

The combination of S.M.D.I. broadband transformer techniques plus the use of beam-lead Schottky barrier diodes achieve consistent low mixer noise figures and stable isolations. Precise transformer and diode balance provide two-tone third order IM ratios of better than 82 dB with -30 dBm input signals. Unique transformer design allows almost constant intermodulation suppression over the mixer's entire operating frequency range.

The subminiature package is sealed, RFI shielded and internally constructed to withstand severe environments. The device configuration allows convenient microstrip or printed circuit board mounting and the leads are easily soldered or welded.

GUARANTEED MINIMUM PERFORMANCE DATA

TEST CONDITION:

LO + 7 dBm (High side LO)
RF - 10 dBm
IF 100 MHz

NOTE:

Specifications below, guaranteed with IF from DC to 1000 MHz. For higher IF frequencies, consult IF response curve for typical rolloff.

OVERALL FREQUENCY RANGE IN MHz:

L	R	X
600-2000	600-2000	DC-1400

FREQUENCY BANDS IN MHz:

	600-1200	1200-2000
Conversion Loss	7.5	9.5
L-R Isolation	20	20
L-X Isolation	17	15
R-X Isolation	10	8

ABSOLUTE MAXIMUM RATINGS:

Operating Temp. - 54 to + 100°C
X-port Input Current 50 mA
Total Input Power 200 mW @ + 25°C
Derate linearly to 50 mW @ 100°C

DC POLARITY:

Positive with L and R port signals in-phase

Specifications subject to
change without notice.

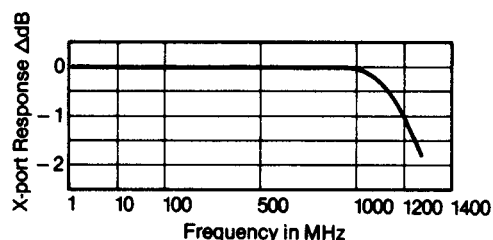
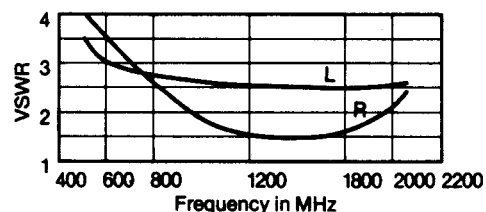
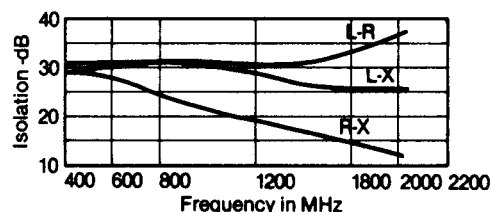
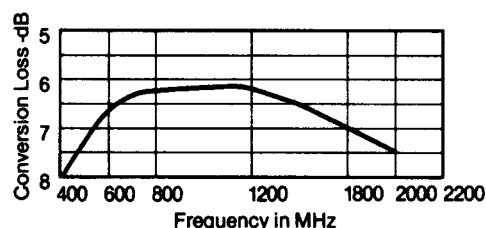
8.10.04 Rev. A

DBM-185
Subminiature
TO-5 Double
Balanced
Mixer
600-2000 MHz



TYPICAL PERFORMANCE

Impedance: All ports 50 ohms
1 dB Compression Point: 0 dBm
1 dB Desensitization Point: -2 dBm
3rd Order Intercept Point: +11 dBm
Noise Figure is within 1 dB of conversion loss
LO Power Range: +4 to +13 dBm



Specifications subject to
change without notice.

ENVIRONMENTAL CONDITIONS

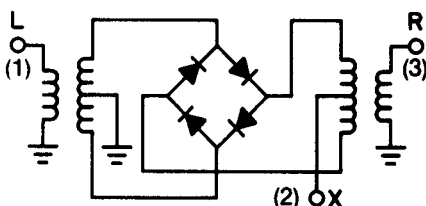
GUARANTEED ENVIRONMENTAL PERFORMANCE:

All units are designed to meet their
specifications over -54°C to
+100°C and after exposure to any or
all of the following tests per
MIL-STD-202E.

Exposure	Method	Test Condition
Thermal Shock	107D	B
Altitude	105C	G
H.F. Vibration	204C	D
Mechanical Shock	213B	C
Random Vibration	214	IIF
(15 minutes per axis)		
Solderability	208C	
Terminal Strength	211A	C
Resistance to Soldering Heat	210A	B

Sealed units, meet the requirements of
Method 106D of MIL-STD-202E when
exposed to humidity.

FUNCTIONAL SCHEMATIC



PACKAGE

MATERIAL:

Header: F15 Kovar per ASTM
Standard F-15-68, (Chemical
Composition per MIL-STD-1276,
Type K)
Cover: Nickel 200 per ASTM
B162-58T

FINISH:

Header & Leads: Gold plating
per MIL-G-45204, Type 1, Grade
A, Class 1, over nickel per QQ-
N-290, Class 1, Form SB
Cover: Nickel 200 per ASTM
B162-58T

