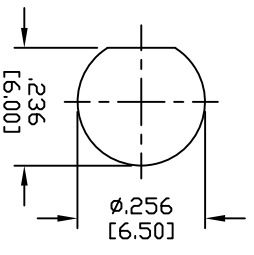
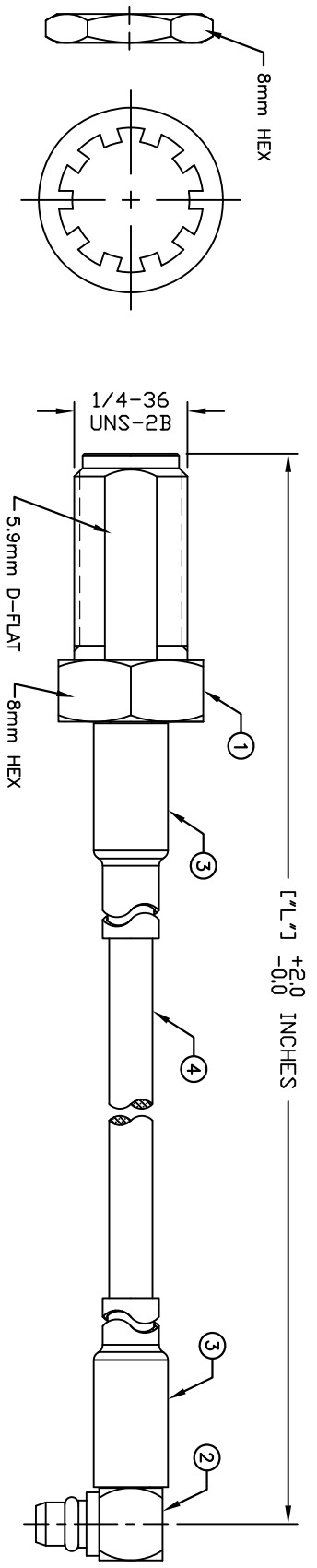
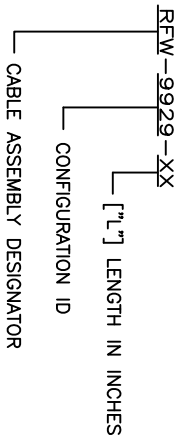


| | | | |
|----------|---------------------|--------------------|----------|
| PART NO. | | RFW-9929-XX | |
| REV | DESCRIPTION | DWN | DATE |
| — | ENGINEERING RELEASE | CZ | 03/31/23 |
| | | APPROVED | JDMc |



RECOMMENDED MOUNTING PATTERN



STANDARD CABLE LENGTHS [L']:

- 12 [1 FOOT]
- 24 [2 FEET]
- 36 [3 FEET]
- 48 [4 FEET]
- 60 [5 FEET]
- 72 [6 FEET]

FOR CUSTOM LENGTHS REPLACE XX FOR NUMBER OF INCHES

SPECIFICATIONS:

IMPEDANCE: 50 Ohms
 TEMPERATURE RANGE: -55°C TO 165°C

| # | PART NUMBER | QTY | DESCRIPTION | FINISH |
|---|-------------|-----|-----------------------|--------|
| 4 | CBL-188U-LF | 1 | RG-188A/U CABLE | BLACK |
| 3 | ST-P0125A-K | 2 | HEAT SHRINK TUBING | BLACK |
| 2 | RMX-9010-1B | 1 | MMCX MALE RIGHT ANGLE | GOLD |
| 1 | RSA-3252-B | 1 | SMA FEMALE BULKHEAD | NICKEL |

| | | |
|--------------------------|-----------------------------------|--|
| CUSTOMER OUTLINE DRAWING | ALL DIMENSIONS ARE REFERENCE ONLY | UNLESS OTHERWISE SPECIFIED: DIMENSIONS ARE IN INCHES AND [MILLIMETERS] |
| DRAWN C. ZUNIGA | CHECKED | 03/31/23 |
| ORU DRAWN C. ZUNIGA | | 03/31/23 |

CUSTOMER OUTLINE DRAWING
 ALL DIMENSIONS ARE REFERENCE ONLY
 UNLESS OTHERWISE SPECIFIED: DIMENSIONS ARE IN INCHES AND [MILLIMETERS]

PROPRIETARY AND CONFIDENTIAL
 THIS DRAWING CONTAINS INFORMATION PROPRIETARY TO RF INDUSTRIES. ANY UNAUTHORIZED USE OF THIS DRAWING IS EXPRESSLY PROHIBITED WITHOUT WRITTEN PERMISSION FROM RF INDUSTRIES. ANY VIOLATION IS PUNISHABLE UNDER U.S. COPYRIGHT LAWS.

RFIndustries
 DIVISION OF RF INDUSTRIES, LTD. SAN DIEGO, CALIFORNIA

RFINDUSTRIES.COM
 (858) 549-6340
 RF@RFINDUSTRIES.COM

SMA FEMALE BULKHEAD TO MMCX MALE R/A CABLE ASSEMBLY

DWG # **RFW-9929-XX**

| | | | | | |
|-------------|-----------|-------|--------|--------|----------|
| CABLE GROUP | CONTROL # | SCALE | FORMAT | SHEET | REVISION |
| B | 000000 | NTS | A | 1 OF 1 | — |