

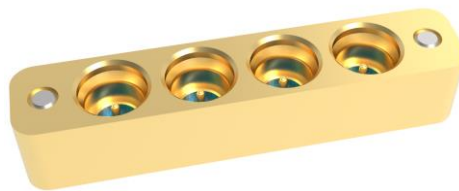
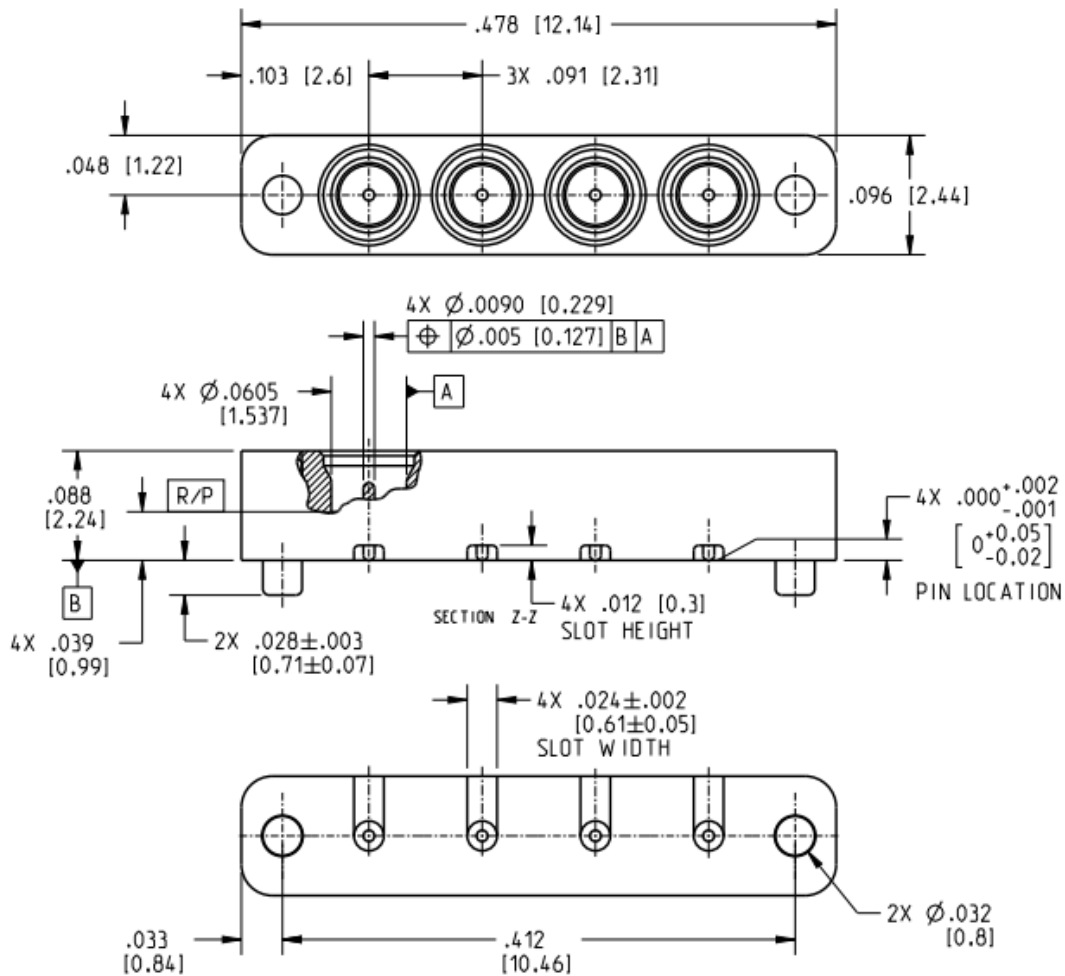
# Technical Data Sheet

# Rosenberger

WSMP

Male, Smooth Bore, High Frequency, 1 X 4 Port, SMT Shroud

W1S15L-40ML5



All dimensions are in inches [mm]  
 Unless otherwise specified tolerances are as follows:  
 .XXX±.001 [0,025]; .XXXX±.0005 [0,012]

## Interface

According to

Rosenberger WSMP™ Interface standards

## Material and plating

### Connector parts

Body and Contact

Dielectric

Alignment Pin

### Material

KOVAR® per ASTM F15

Corning 7070 Glass

SST per ASTM A582

### Plating

Hard Gold, 6 µIn [0,15 µm] over Nickel

Passivated

Rosenberger North America  
 P.O. Box 309 Akron, PA USA 17501  
[www.rosenbergerna.com](http://www.rosenbergerna.com)

Tel. : +1.717.859.8900  
 Fax : +1.717.859.7044  
 Email : [info@rosenbergerna.com](mailto:info@rosenbergerna.com)

Page

1 / 2

PROPRIETARY AND CONFIDENTIAL  
 This data sheet is the property of Rosenberger North America. By acceptance of this document you agree that all the rights to drawings, specifications, processes and other data therein, as well as the proprietary and novel features of the subject matter, are reserved by Rosenberger North America and are disclosed in confidence. They are not to be manufactured, used, sold or disclosed to others, nor are devices embodying such features or information derived from these disclosures to be used or disclosed, unless and until expressly authorized by Rosenberger North America. These drawings, specifications, processes, etc., are and remain the property of Rosenberger North America, and are not to be copied or reproduced without permission.

OSR-730-05  
 RNA Datasheet2 Rev -  
 6/26/19

# Technical Data Sheet

# Rosenberger

WSMP

Male, Smooth Bore, High Frequency, 1 X 4 Port, SMT Shroud

W1S15L-40ML5

### Electrical data (@ STP unless otherwise specified)

Impedance	50 Ω
Frequency	DC to 100 GHz
Return loss	≥ 18 dB, DC to 40 GHz ≥ 15 dB, 40 to 70 GHz ≥ 12 dB, 70 to 100 GHz
Insertion loss	≤ 0.12 x √f (GHz) dB
Insulation resistance	≥ 3.5 GΩ
Center contact resistance	≤ 6.0 mΩ
Outer contact resistance	≤ 2.0 mΩ
Test voltage	250 V rms
RF High Potential	150 V rms @ 5 MHz

### Mechanical data

Mating cycles	≥ 500
- Smooth Bore	
Engagement force	1.2 lbf [5,3 N] max
- Smooth Bore	
Disengagement force	1.0 lbf [4,45 N] min
- Smooth Bore	

### Environmental data

Temperature range	-55°C to +165°C
Thermal shock	MIL-STD-202-107, Condition B
Vibration	MIL-STD-202-204, Condition B
Shock	MIL-STD-202-213, Condition A
Moisture resistance	MIL-STD-202-106, except Step 7B
Corrosion	MIL-STD-202-101, Condition B
Max soldering temperature	IEC 61760-1, +500°F [+260°C] for 10 seconds
2002/95/EC (RoHS)	compliant

### Documents

Mechanical PCB Layout	MB_W1S15L
-----------------------	-----------

### Packing

Standard

**PROPRIETARY AND CONFIDENTIAL**  
 This data sheet is the property of Rosenberger North America. By acceptance of this document you agree that all the rights to drawings, specifications, processes and other data therein, as well as the proprietary and novel features of the subject matter, are reserved by Rosenberger North America and are disclosed in confidence. They are not to be manufactured, used, sold or disclosed to others, nor are devices embodying such features or information derived from these disclosures to be used or disclosed, unless and until expressly authorized by Rosenberger North America. These drawings, specifications, processes, etc., are and remain the property of Rosenberger North America, and are not to be copied or reproduced without permission.

OSR-730-05  
RNA Datasheet2 Rev -  
6/26/19

Draft	Date	Approved	Date	Rev.	Engineering change number	Name	Date
D. Fitzkee	07/29/19	B. Moyer	07/29/19	a01	Revised per ECN 20-u187	B. Moyer	07/17/20
Rosenberger North America P.O. Box 309 Akron, PA USA 17501 <a href="http://www.rosenbergerna.com">www.rosenbergerna.com</a>					Tel. : +1.717.859.8900 Fax : +1.717.859.7044 Email : <a href="mailto:info@rosenbergerna.com">info@rosenbergerna.com</a>		Page 2 / 2