

SPECIFICATIONS

ELECTRICAL

FREQUENCY RANGE _____ DC - 18 GHz

VSWR

| | |
|---------------|------|
| DC - 4 GHz | 1.05 |
| 4 - 8 GHz | 1.10 |
| 8 - 12.4 GHz | 1.15 |
| 12.4 - 18 GHz | 1.20 |

IMPEDANCE _____ 50 OHMS

TEMPERATURE RANGE (°C) _____ -55 TO +125

POWER (AVG) _____ 2 WATTS
POWER DERATES LINEARLY FROM +45°C TO <10% @+125°C

POWER (PEAK) _____ 500 WATTS
(<5 μ SEC PW, <1% DUTY CYCLE)

MECHANICAL

INNER CONDUCTOR: _____ BERYLLIUM COPPER PER
ASTM B196 & B197.

OUTER CONDUCTOR: _____ STEEL, CORROSION RESISTANT PER
ASTM A484 & A582, CLASS 303, COND. A.

DIELECTRIC: TEFLON PER ASTM D1710.

FINISH

INNER CONDUCTOR: _____ GOLD PLATED PER MIL-PRF-39012.

HOUSING/COUPLING NUT FINISH PER SUFFIX (REPLACING -0X IN P/N)

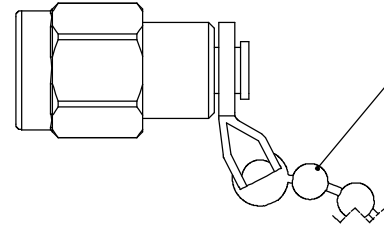
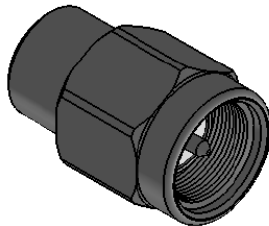
- 00 OUTER CONDUCTOR/NUT GOLD PLATED
- 02 OUTER CONDUCTOR/NUT PASSIVATED SS
- 01 OUTER CONDUCTOR GOLD PLATED, NUT PASSIVATED SS

ADD C25 FOR 2-2.5" CHAIN ATTACHED

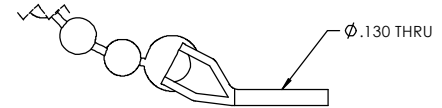
CONNECTOR INTERFACE COMPLIES WITH MIL-PRF-39012 AND MIL-STD-348
FOR SMA MATING CHARACTERISTICS.

MARKING

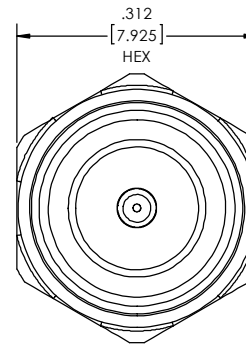
PART LOOKS LIKE PRODUCT IMAGE ABOVE.
PART MARKING ORIENTATION AND FORMAT AS SHOWN.
MARKING TO BE AS LARGE AS POSSIBLE, CLEAR, READABLE, AND A BLACK COLOR.
REPLACE XX WITH APPROPRIATE HOUSING/COUPLING NUT FINISH ON WORK ORDER.
YYWW EQUALS DATE CODE.



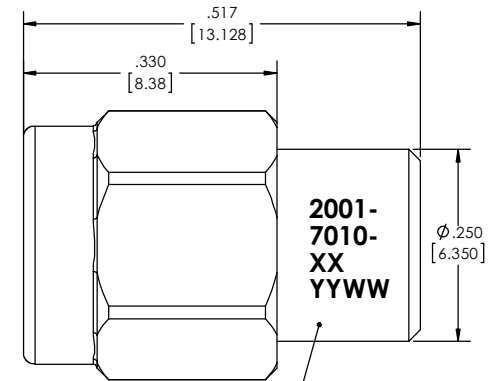
SHOWN WITH OPTIONAL
#3 BEAD CHAIN STOCK
SS/INCONEL MATERIAL
2" - 2.5" LONG
(SEE NOTE)



Ø.130 THRU



.312
[7.925]
HEX



MARKING AREA
SEE NOTE

2001-
7010-
XX
YYWW

Ø.250
[6.350]

| QTY. | PART NUMBER | DESCRIPTION | ITEM NO. |
|------|----------------|--|----------|
| | 2001-7010-0X | TERMINATION, SMA, MALE, DC-18GHz, 2 WATTS AVG., 500 WATTS PEAK | |
| 1 | 2001-7000-0XBB | ASSEMBLY, TERMINATION, SMA, MALE, DC-18GHz, 2 WATTS AVG., 500 WATTS PEAK UNMARKED | 1 |

| | | | |
|---|--|---|----------------|
| DRAWING PRACTICES PER ANSI Y14.5 DIMENSIONS ARE IN INCHES AND APPLY BEFORE/AFTER PROCESSING | UNLESS OTHERWISE SPECIFIED TOLERANCES IN: DECIMALS INCH (MM) | DRAWN MCCORMICK 7/8/14 | DATE 7/8/14 |
| SURFACE ROUGHNESS INCHES 63 ✓ | .X" .05" [1.27] .XX" .03" [.76] .XXX" .010" [.25] | CHECKED MCCORMICK 7/8/14 | DATE 7/8/14 |
| FINISH: SEE NOTES | ANGLES ±0°30' REMOVE ALL BURRS/SHARP W/ BREAK / R OF .003" TO .0005" UNLESS OTHERWISE NOTED DIAS CONCENTRIC <.003 T.I.R. | ENG APPR. T.KUHN 7/8/14 | DATE 7/8/14 |
| MATERIAL: SEE NOTES | DO NOT SCALE PRINT | THESE DRAWINGS AND SPECIFICATIONS ARE THE PROPERTY OF XMA CORP. OR OMNI SPECTRA AND SHALL NOT BE REPRODUCED PART - AS A BASIS FOR THE MANUFACTURE OR SALE OF OTHER ITEMS WITHOUT THE EXPRESS WRITTEN PERMISSION OF XMA CORP. | |
| NOTE: THIS DRAWING INCORPORATES THIRD ANGLE PROJECTION. | | | |
| INTERPRET IAW ANSI Y14.5-1982 | | | |

| | | | |
|-----------|-----------------------|--------------------------------|----------|
| SIZE C | CAGE CODE 3HT76 | DRAWING NUMBER 2001-7010-0X | REV B |
| SCALE | PLATED AREA SQ. IN | SHEET 1 OF 1 | |



Phone: 603-222-2256 Fax: 603-222-2259
150 Dow Street, Manchester, NH 03101

TERMINATION, SMA, MALE, DC-18GHz,
2 WATTS AVG., 500 WATTS PEAK