

**PRODUCTION
RELEASE**

NOTE:
THIS DRAWING INCORPORATES
THIRD ANGLE PROJECTION



INTERESTED PARTY ANST 114.5.

REVISIONS			
REV	DESCRIPTION		APPROVED
-	Released	10/23/2012	D. Saunders

HOUSING: STAINLESS STEEL IAW ASTM-A484 &
ASTM-A582, ALLOY 303, COND A
CONTACT: BERYLLIUM COPPER
DIELECTRIC - HIGH TEMPERATURE PLASTIC BEAD

HOUSING - PASSIVATED STAINLESS STEEL
CONDUCTOR - GOLD PLATED IAW MIL-PRF-39012

FREQUENCY RANGE DC - 50 GHz, Usable to 65 GHz

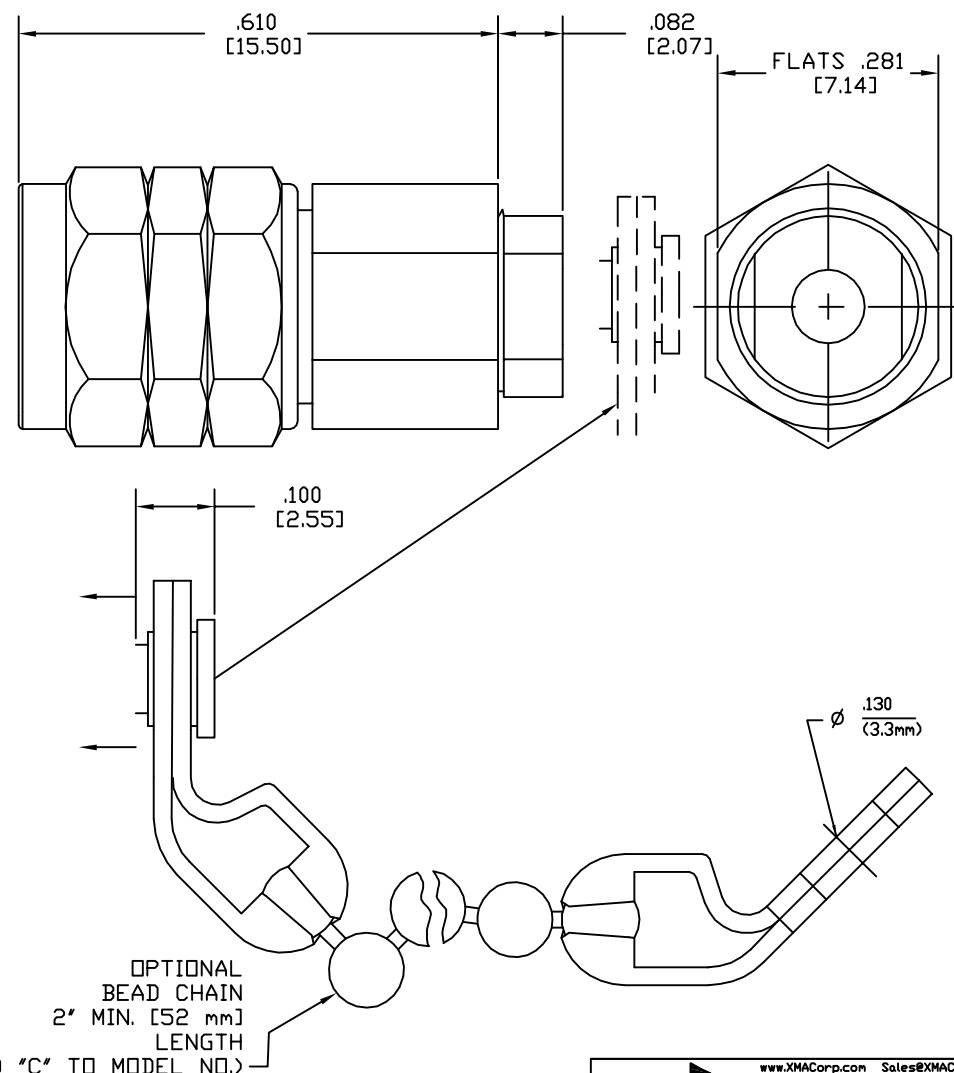
6701-700X-02 VSWR 1.10+fGHz(.01) MAX.

6701-710X-02 VSWR	DC-18 GHz	18 - 40 GHz	40 - 50 GHz
	≤1.10	≤1.30	≤1.45

POWER (AVG. MAX.) _____ @25°C SEE TABLE
DERATES LINEARLY TO 10% AT +100°C

IMPEDANCE 50 OHMS

OPERATING/STORAGE TEMPERATURE RANGE -55 TO +100°C



6701-700X-02	POWER LEVEL	6701-710X-02	POWER LEVEL
6701-7000-02	0.5 WATT	6701-7100-02	0.5 WATT
6701-7001-02	1 WATT	6701-7101-02	1 WATT

FOR CHAIN ADD THE -C TO END OF LISTED PN ABOVE
i.e. 6701-7001-02 WITH CHAIN IS 6701-7002-02-C

DRAWING PRACTICES PER ANSI-Y-14.5
ML-STD-200 & 2000

DIMENSIONS ARE IN INCHES AND
APPLY BEFORE/AFTER PROCESSING

SURFACE ROUGHNESS 63 ✓



FINISH
SEE NOTES

MATERIAL
SEE NOTES

UNLESS OTHERWISE SPECIFIED		
TOLERANCES ON		
DECIMALS	INCH	MILL
.X"	.05"	[1.3]
.XX"	.03"	[.75]
.XXX"	.015	[.38]
.XXXX"		
ANGLES		
UNLESS OTHERWISE NOTED		
DIAS CONCENTRIC < .001		

DRAWN	DATE
D. SAUNDERS	10/23/2012
CHECKED	DATE
T. Kuhn	10/23/2012
ENG.	DATE
D. SAUNDERS	10/23/2012

THESE DRAWINGS AND SPECIFICATIONS ARE THE PROPERTY OF XMA CORP. OR OMNISPECTRA AND SHALL NOT BE REPRODUCED, COPIED NOR USED - IN WHOLE OR IN PART - AS A BASIS FOR THE MANUFACTURE OR SALE OF OTHER ITEMS WITHOUT THE EXPRESS

		www.XMACorp.com Sales@XMACorp.com	
		Powered by: 	
		Phone: 603-222-2256 Fax: 603-222-2259 150 Bow Street, Manchester, NH 03101	
TITLE			
50 GHz, 1.85mm MALE TERMINATION 1/2 and 1 WATT INPUT POWER			
SIZE	CAGE CODE	DWG NO.	
C	3HT76	6701-7X0X-02	
SCALE	8:1	PLATING AREA	XXX
		SHEET	1 OF 1