

SPECIFICATIONS

ELECTRICAL

FREQUENCY RANGE _____ DC - 65 GHz

STANDARD dB VALUES _____ SEE CHART A

ATTENUATION ACCURACY _____ DC - 26.5 GHz 26.5 - 40 GHz 40 - 60 GHz 60 - 65 GHz
3, 6 dB _____ ±0.75 dB ±1.0 dB ±1.5 dB ±1.5 dB
10 dB _____ ±0.75 dB ±1.25 dB ±1.5 dB ±1.75 dB
15 & 20 dB _____ ±1.0 dB ±1.25 dB ±2.0 dB ±2.5 dB
30 dB _____ ±1.25 dB ±1.5 dB ±2.0 dB ±5.0 dB

VSWR (MAX) _____ DC-26.5 GHz 26.5 - 40 GHz 40 - 65 GHz
_____ <1.35 <1.55 <1.65

INPUT POWER (AVG. MAX.) _____ 1 WATT @25°C SEE TABLE
DERATES LINEARLY TO 10% AT +100°C from + 25°

IMPEDANCE _____ 50 OHMS

OPERATING/STORAGE TEMP. RANGE _____ -55 TO +100°C

MATERIAL

HOUSING: STAINLESS STEEL IAW ASTM-A484 & ASTM-A582, ALLOY 303, COND A

CONTACT: BERYLLIUM COPPER

DIELECTRIC - TEFLON

FINISH

HOUSING - PASSIVATED STAINLESS STEEL

CONDUCTOR - GOLD PLATED IAW MIL-PRF-39012

MARKING

PART LOOKS LIKE PRODUCT IMAGE ABOVE.

PART MARKING ORIENTATION AND FORMAT AS SHOWN (CURVED SURFACE).

dB = SEE WORK ORDER FOR TWO DIGIT dB VALUE.

MARKING TO BE AS LARGE AS POSSIBLE. .020" SHOWN.

TEXT HEIGHT IS SUGGESTED ONLY, FIT AS DICTED

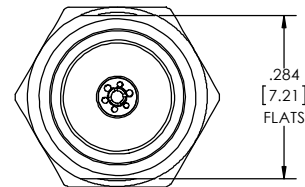
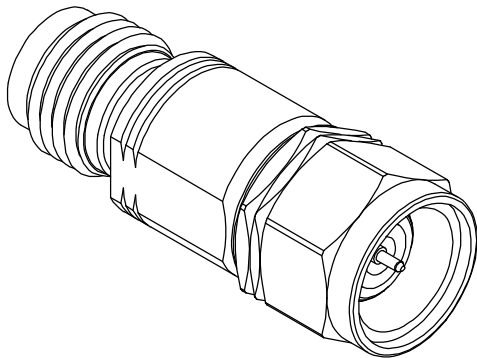
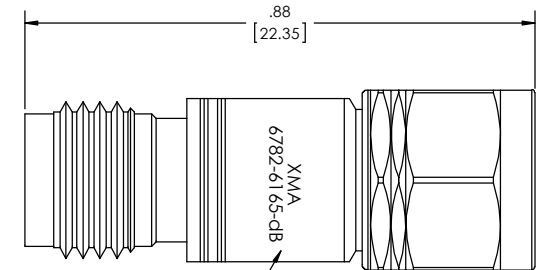
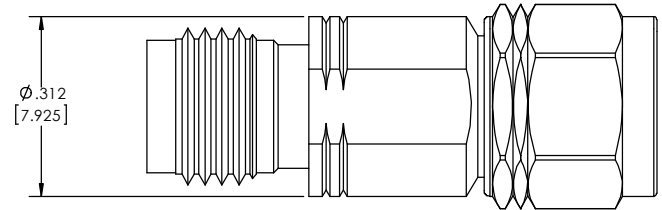


CHART A	
-dB	dB VALUE
03	3
06	6
10	10
20	20
30	30




MARKING AREA
SEE NOTE

QTY.	PART NUMBER	DESCRIPTION	ITEM NO.
X	6782-6165-dB	ATTENUATOR, 1.85mm, MALE TO FEMALE, DC-65 GHz, 1 WATT	
1	TA-6782-6165-dBU	ASSEMBLY, ATTENUATOR, 1.85mm, MALE TO FEMALE, DC-65 GHz, 1 WATT, UNMARKED	1

DRAWING PRACTICES PER ANSI Y14.5 UNLESS OTHERWISE SPECIFIED DIMENSIONS ARE IN INCHES AND APPLY BEFORE/AFTER PROCESSING	
SURFACE ROUGHNESS INCHES	63
FINISH:	
NOTE: THIS DRAWING INCORPORATES THIRD ANGLE PROJECTION.	
INTERPRET IAW ANSI Y14.5-1982	

UNLESS OTHERWISE SPECIFIED TOLERANCES IN:	
DECIMALS	INCH (MM)
.X"	.05" [1.27]
.XX"	.03" [.76]
.XXX"	.010" [.25]
ANGLES ±0°30' REMOVE ALL BURRS/SHARP W/ BREAK / R OF .003" TO .0005" UNLESS OTHERWISE NOTED DIAS CONCENTRIC <.003 T.I.R.	
DO NOT SCALE PRINT	

DRAWN MCCORMICK	DATE 07/16/14
CHECKED MCCORMICK	DATE 07/16/14
ENG APPR. T.KUHN	DATE 07/16/14
THESE DRAWINGS AND SPECIFICATIONS ARE THE PROPERTY OF XMA CORP. OR OMNI SPECTRA AND SHALL NOT BE REPRODUCED, COPIED NOR USED IN WHOLE OR IN PART AS A BASIS FOR THE MANUFACTURE OR SALE OF OTHER ITEMS WITHOUT THE EXPRESS WRITTEN PERMISSION OF XMA CORP.	

				Phone: 603-222-2256 Fax: 603-222-2259 150 Dow Street, Manchester, NH 03101	
TITLE					
ATTENUATOR, 1.85mm, MALE TO FEMALE, DC-65 GHz, 1 WATT					
SIZE	CAGE CODE	DRAWING NUMBER			REV
C	3HT76	6782-6165-dB			X2
SCALE	PLATED AREA SQ. IN	SHEET 1 OF 1			