

SPECIFICATIONS

1. MATERIAL:

HOUSING: STAINLESS STEEL IAW ASTM-A484 & ASTM-A582, ALLOY 303, COND A
CONTACT: BERYLLIUM COPPER
DIELECTRIC - HIGH TEMPERATURE PLASTIC BEAD

2. FINISH:

HOUSING - PASSIVATED STAINLESS STEEL
CONDUCTOR - GOLD PLATED IAW MIL-PRF-39012

3. ELECTRICALS:

FREQUENCY RANGE _____ DC - 50 GHz

STANDARD dB VALUES _ 3, 6, 10, 20 & 30 dB

ATTENUATION ACCURACY	DC - 26.5 GHz	26.5 - 40 GHz	40 - 50 GHz
3, 6 & 10 dB	±0.5 dB	±1.0 dB	±1.5 dB
20 & 30 dB	±0.75 dB	±1.25 dB	±2.0 dB

VSWR (MAX)	DC-26.5 GHz	26.5 - 40 GHz	40 - 50 GHz
	<1.35	<1.60	<1.75

POWER (AVG. MAX.) _____ @25°C SEE TABLE
DERATES LINEARLY TO 10% AT +100°C

IMPEDANCE _____ 50 OHMS

OPERATING/STORAGE TEMPERATURE RANGE -55 TO +100°C

PART ORDERING INFORMATION

8582 - 6X50 - DB - OTHER

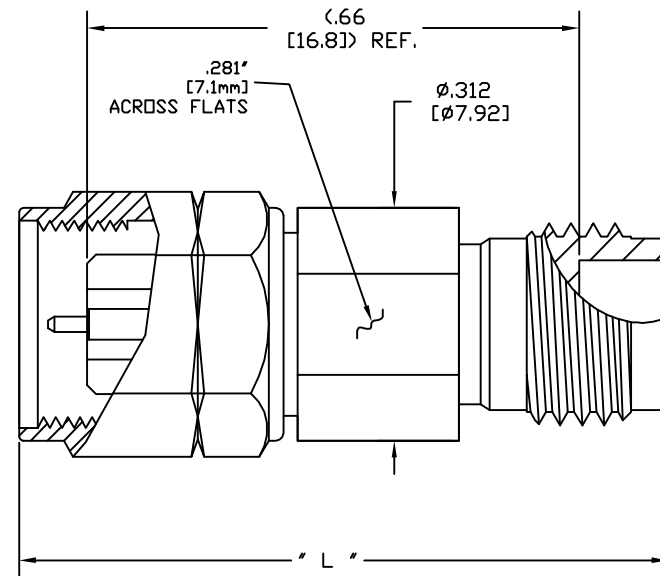
DB: SIGNIFIES NOMINAL DB VALUE OF UNIT

03 = 3 DB	06 = 6 DB	30 = 30DB
10 = 10 DB	20 = 20 DB	

8582-6X50-DB	POWER LEVEL
X = 0	0.5 WATT
X = 1	1 WATT

DB VALUE	LENGTH "L"
0-20 _____	.871±.030
30 _____	.911±.030

FOR "-OTHER" DESIGNATIONS CONTACT FACTORY



REVISIONS				
REV	DESCRIPTION	ECO #	DATE	APPROVED
C	ADDED INTERFACE DIM	14-130	3-28-14	T.KUHN

QTY	PART NUMBER	DESCRIPTION	ITEM NO.
X	8582-6X50-DB	50 GHz, 2.4mm, M-F ATTENUATOR, 1 WATT INPUT POWER	
1	TA-8582-6X50-DBU	50 GHz, 2.4mm, M-F ATTENUATOR, 1 WATT INPUT POWER UNMARKED	1

DRAWING PRACTICES PER ANSI-Y-14.5 UNLESS OTHERWISE SPECIFIED DIMENSIONS ARE IN INCHES AND APPLY BEFORE/ AFTER PROCESSING SURFACE FINISH 63 FINISH SEE NOTES SEE NOTES NOTE: THIS DRAWING INCORPORATES THIRD ANGLE PROJECTION INTERPRET IAW ANSI Y14.5-1998	TOLERANCES IN DECIMALS INCHES .XX" .05" [1.27] .XXX" .03" [76] .XXXX" .010" [25]
--	--

UNLESS OTHERWISE SPECIFIED ANGLES ±0°30' REMOVE ALL BURRS/SHARP W/ BREAK / R OF .003" TO .0005" UNLESS OTHERWISE NOTED DIAS CONCENTRIC <.003 T.I.R. DO NOT SCALE PRINT	DRAWN D.SAUNDERS CHECKED DATE 01/01/07 DATE ENG APPR. D.SAUNDERS DATE 01/01/09
--	---

THESE DRAWINGS AND SPECIFICATIONS ARE THE PROPERTY OF XMA CORP. OR OMNI SPECTRA AND SHALL NOT BE REPRODUCED, COPIED NOR USED - IN WHOLE OR IN PART - AS A BASIS FOR THE MANUFACTURE OR SALE OF OTHER ITEMS WITHOUT THE EXPRESS WRITTEN PERMISSION OF XMA CORP.	DRAWING NUMBER 8582-6X50-DB REV C
--	--

XMA Omni Spectra Phone: 603-222-2256 Fax: 603-222-2259 150 Dow Street, Manchester, NH 03101	50 GHz, 2.4mm, M-F ATTENUATOR, 1 WATT INPUT POWER
SIZE C CAGE CODE 3HT76 SCALE 8:1	SHEET 1 OF 1 TEMPLATE REV A